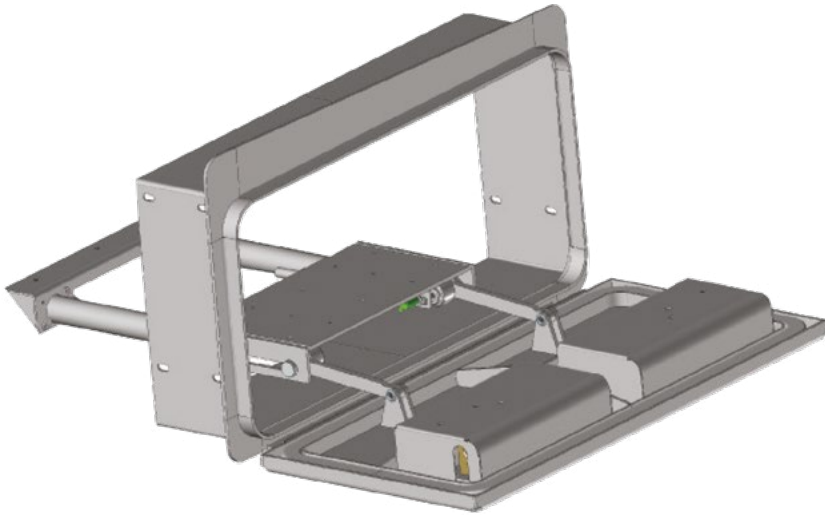


HYDRAULIC WATERTIGHT HATCH 2648 FOR RETRACTABLE SLEWING GANGWAY



model	A (mm/inch)	B (mm/inch)	C (mm/inch)	D (mm/inch)	L (mm/inch)	α	$\alpha 1$
2648	630 24 ⁴ / ₅	828 32 ³ / ₅	579 22 ⁴ / ₅	1101 43 ¹ / ₃	720 28 ¹ / ₃	99°	130°

Opening of box gangway port managed by a hydraulic opening system. Its compact design makes watertightness possible with no box dimension increase.

Standard equipment

- Hinges made of polished AISI 316 stainless steel including hydraulic cylinders
- Hydraulic hoses

Options

- Electronic unit with control panel and remote control
- Hydraulic unit with emergency kit

Certifiable product

